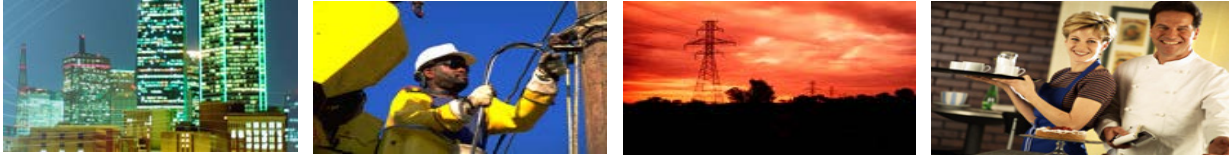
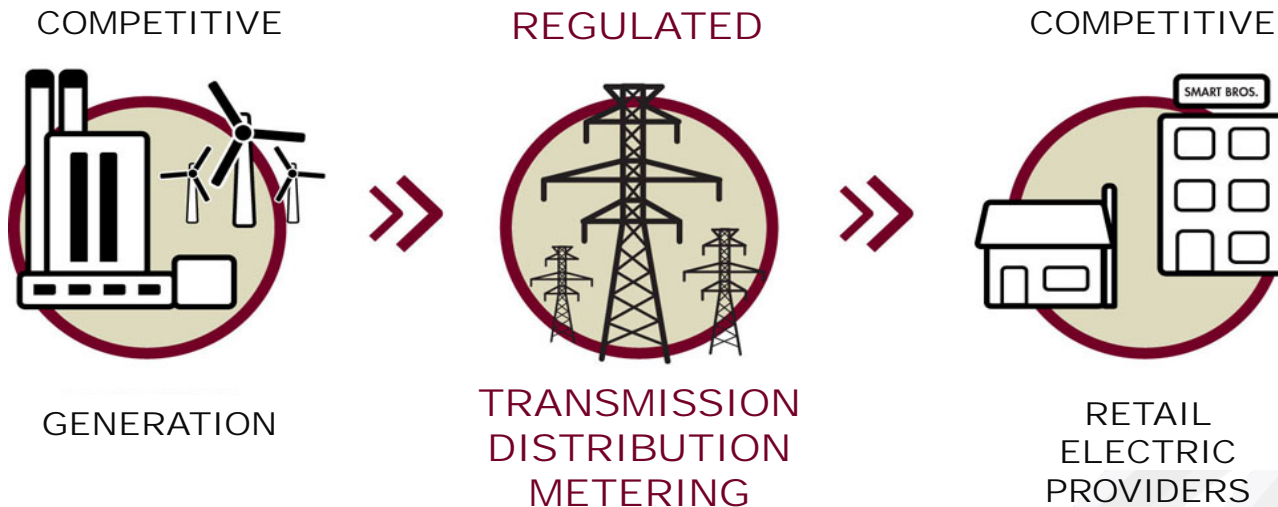
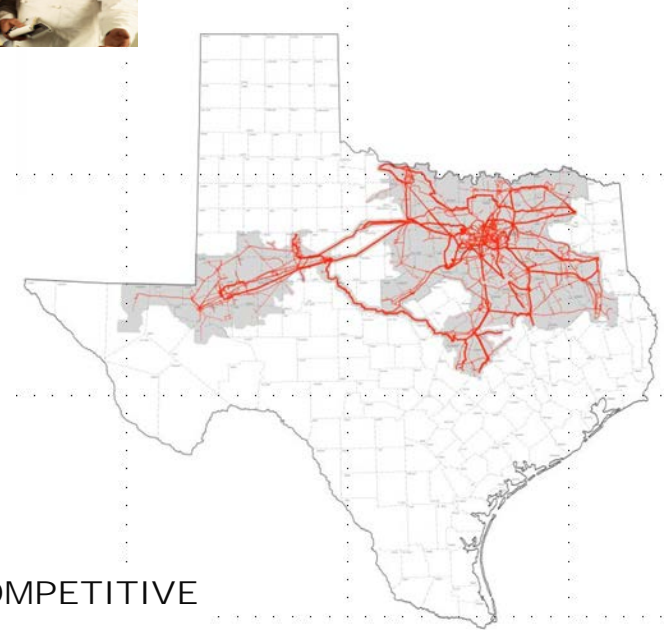


ONCOR AT A GLANCE



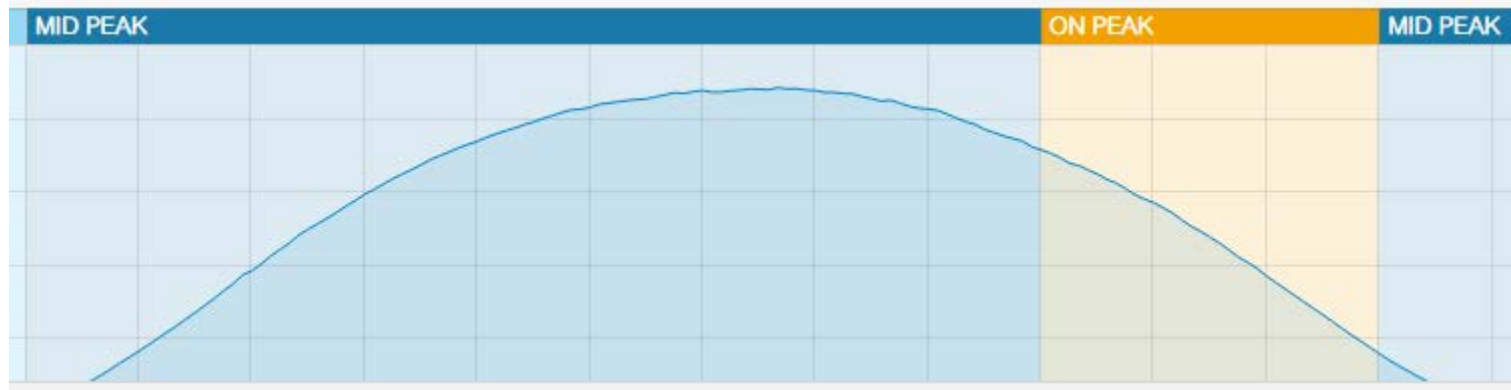
Regulated transmission and distribution utility

- Serves over 3.3 M customers/meters
- 402 Cities and 91 counties
- 3,784 Employees





South Facing

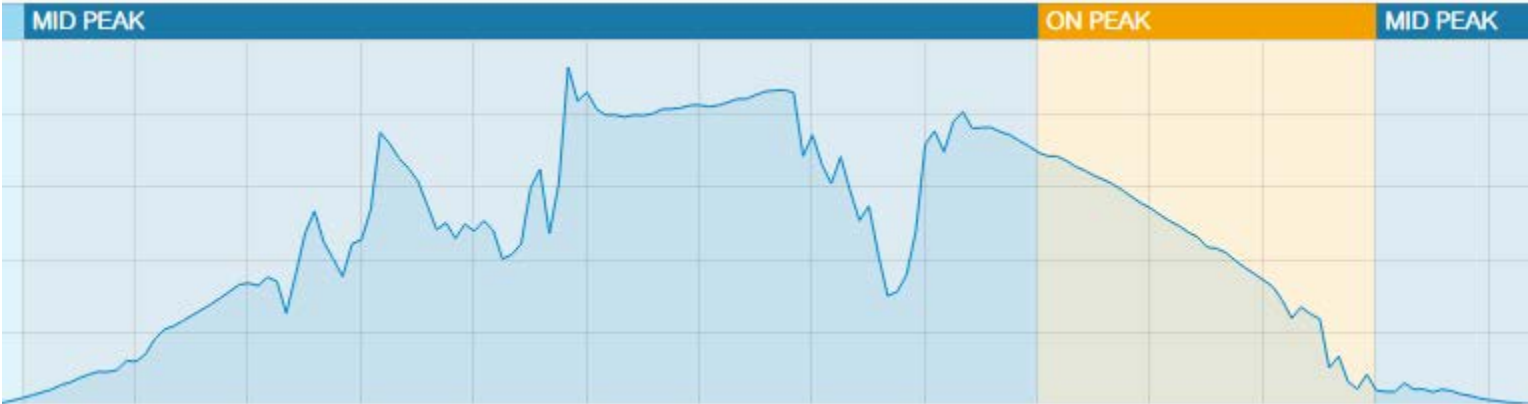


West Facing

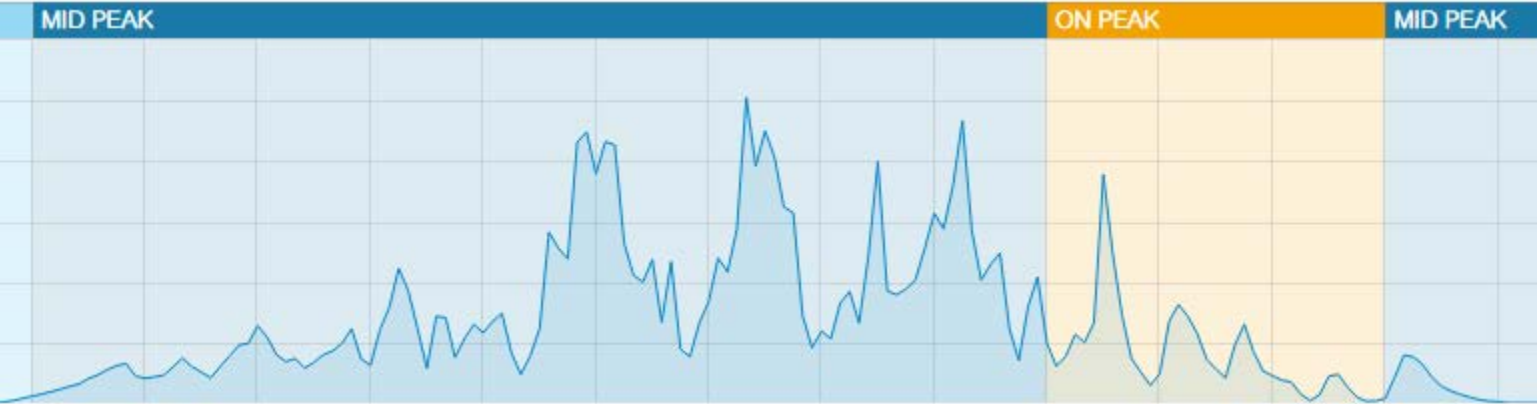


Variability

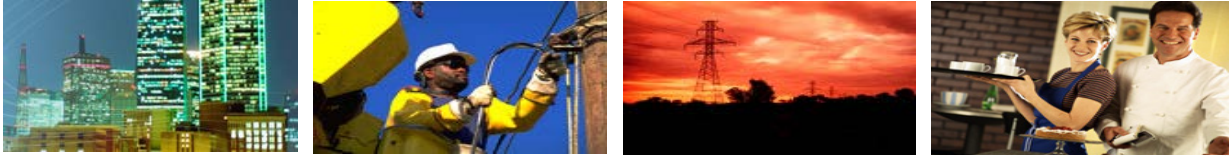
August 1, 2015



May 8, 2015



ONCOR AT A GLANCE



Regulated transmission and distribution utility

- Serves over 3.3 M customers/meters
- 402 Cities and 91 counties
- 3,784 Employees

